

# FASTENING TOOL

# IMPACT WRENCH

Drive Size	3/4 in.	19.0 mm
Bolt Capacity	7/8 in.	22.0 mm
Free Speed	4,300 r.p.m.	
Impact Per Min.	950 i.p.m.	
Recommended Torque	150-590 ft-lb	200-800 Nm
Maximum Torque	590 ft-lb	800 Nm
Length (w/o socket)	8-9/16 in.	216.0 mm
Weight (w/o socket)	8.8 lbs.	4.0 kg
Air Consumption (normal)	16.6 c.f.m.	0.47 m <sup>3</sup> /min
Hose Size	3/8 in.	9.5 mm
Anvil Length (KW-230P)	1-3/16 in.	29.0 mm
Anvil Length (KW-230P-2)	2-9/16 in.	65.0 mm

## ■ 3/4" (19mm) SQ.DR. KW-230P



Swing Hammer

※ Performance figures are at 0.62MPa(Pe)(90PS.I.)air pressure.

Drive Size	3/4 in.	19.0 mm
Bolt Capacity	3/4 in.	20.0 mm
Free Speed	4,500 r.p.m.	
Impact Per Min.	1,080 i.p.m.	
Recommended Torque	110-480 ft-lb	150-650 Nm
Maximum Torque	480 ft-lb	650 Nm
Length (w/o socket)	9-1/2 in.	240.0 mm
Weight (w/o socket)	9.2 lbs.	4.2 kg
Air Consumption (normal)	16.6 c.f.m.	0.47 m <sup>3</sup> /min
Hose Size	3/8 in.	9.5 mm
Anvil Length (KW-230P)	1-7/16 in.	36.0 mm
Anvil Length (KW-230P-2)	2-7/8 in.	72.0 mm

## ■ 3/4" (19mm) SQ.DR. KW-20P



Single Hammer

Drive Size	3/4 in.	19.0 mm
Bolt Capacity	7/8 in.	22.0 mm
Free Speed	3,800 r.p.m.	
Impact Per Min.	1,100 i.p.m.	
Recommended Torque	190-640 ft-lb	250-870 Nm
Maximum Torque	640 ft-lb	870 Nm
Length (w/o socket)	10 in.	253.0 mm
Weight (w/o socket)	13.6 lbs.	6.2 kg
Air Consumption (normal)	21.2 c.f.m.	0.60 m <sup>3</sup> /min
Hose Size	3/8 in.	9.5 mm
Anvil Length (KW-20PI)	1-1/4 in.	31.0 mm
Anvil Length (KW-20PI-2)	2-11/16 in.	67.0 mm

## ■ 3/4" (19mm) SQ.DR. KW-20PI



Single Hammer

※ Performance figures are at 0.62MPa(Pe)(90PS.I.)air pressure.

## ■ 1" (25.4mm) SQ.DR. KW-430P

Drive Size	1 in.	25.4 mm
Bolt Capacity	1-9/16 in.	40.0 mm
Free Speed	4,300 r.p.m.	
Impact Per Min.	540 i.p.m.	
Recommended Torque	740-1,480 ft-lb	1,000-2,000 Nm
Length (w/o socket)	11-1/4 in.	285.0 mm
Weight (w/o socket)	24.0 lbs.	10.9 kg
Air Consumption (normal)	28.2 c.f.m.	0.80 m <sup>3</sup> /min
Hose Size	1/2 in.	12.7 mm
Anvil Length (KW-430P)	1-11/16 in.	43.0 mm



Swing Hammer

※ Performance figures are at 0.62MPa(Pe)(90PS.I.)air pressure.

## ■ 1" (25.4mm) SQ.DR. KW-380P

Drive Size	1 in.	25.4 mm
Bolt Capacity	1-1/2 in.	38.0 mm
Free Speed	3,200 r.p.m.	
Impact Per Min.	700 i.p.m.	
Recommended Torque	250-1,010 ft-lb	340-1,370 Nm
Maximum Torque	1,180 ft-lb	1,600 Nm
Length (w/o socket)	10-1/2 in.	266.0 mm
Weight (w/o socket)	21.1 lbs.	9.6 kg
Air Consumption (normal)	25.8 c.f.m.	0.73 m <sup>3</sup> /min
Hose Size	1/2 in.	12.7 mm
Anvil Length	1-1/2 in.	38.0 mm

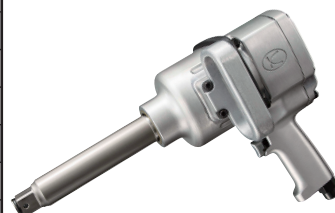


Swing Hammer

※ Performance figures are at 0.62MPa(Pe)(90PS.I.)air pressure.

## ■ 1" (25.4mm) SQ.DR. KW-430P-8

Drive Size	1 in.	25.4 mm
Bolt Capacity	1-9/16 in.	40.0 mm
Free Speed	4,300 r.p.m.	
Impact Per Min.	540 i.p.m.	
Recommended Torque	740-1,480 ft-lb	1,000-2,000 Nm
Length (w/o socket)	17 in.	431.0 mm
Weight (w/o socket)	26.0 lbs.	11.8 kg
Air Consumption (normal)	28.2 c.f.m.	0.80 m <sup>3</sup> /min
Hose Size	1/2 in.	12.7 mm
Anvil Length (KW-430P-8)	8 in.	202.0 mm



Swing Hammer

※ Performance figures are at 0.62MPa(Pe)(90PS.I.)air pressure.

## ■ 1" (25.4mm) SQ.DR. KW-40P

Drive Size	1 in.	25.4 mm
Bolt Capacity	1-9/16 in.	40.0 mm
Free Speed	2,500 r.p.m.	
Impact Per Min.	550 i.p.m.	
Recommended Torque	290-1,110 ft-lb	390-1,500 Nm
Maximum Torque	1,330 ft-lb	1,800 Nm
Length (w/o socket)	12-1/16 in.	306.0 mm
Weight (w/o socket)	25.4 lbs.	12.7 kg
Air Consumption (normal)	27.9 c.f.m.	0.72 m <sup>3</sup> /min
Hose Size	1/2 in.	12.7 mm
Anvil Length	1-5/16 in.	32.0 mm



Single Hammer

※ Performance figures are at 0.62MPa(Pe)(90PS.I.)air pressure.