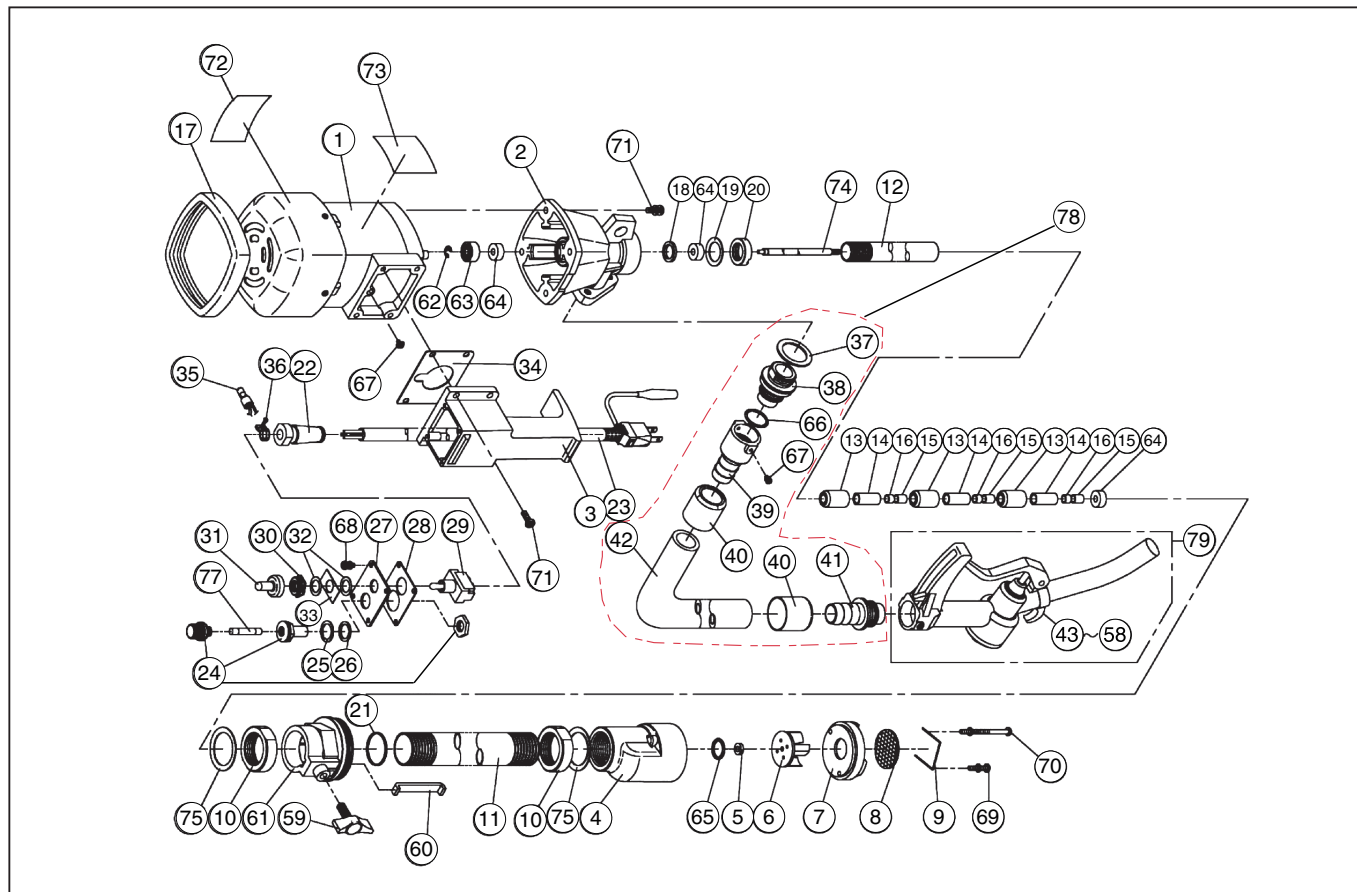


FA-100

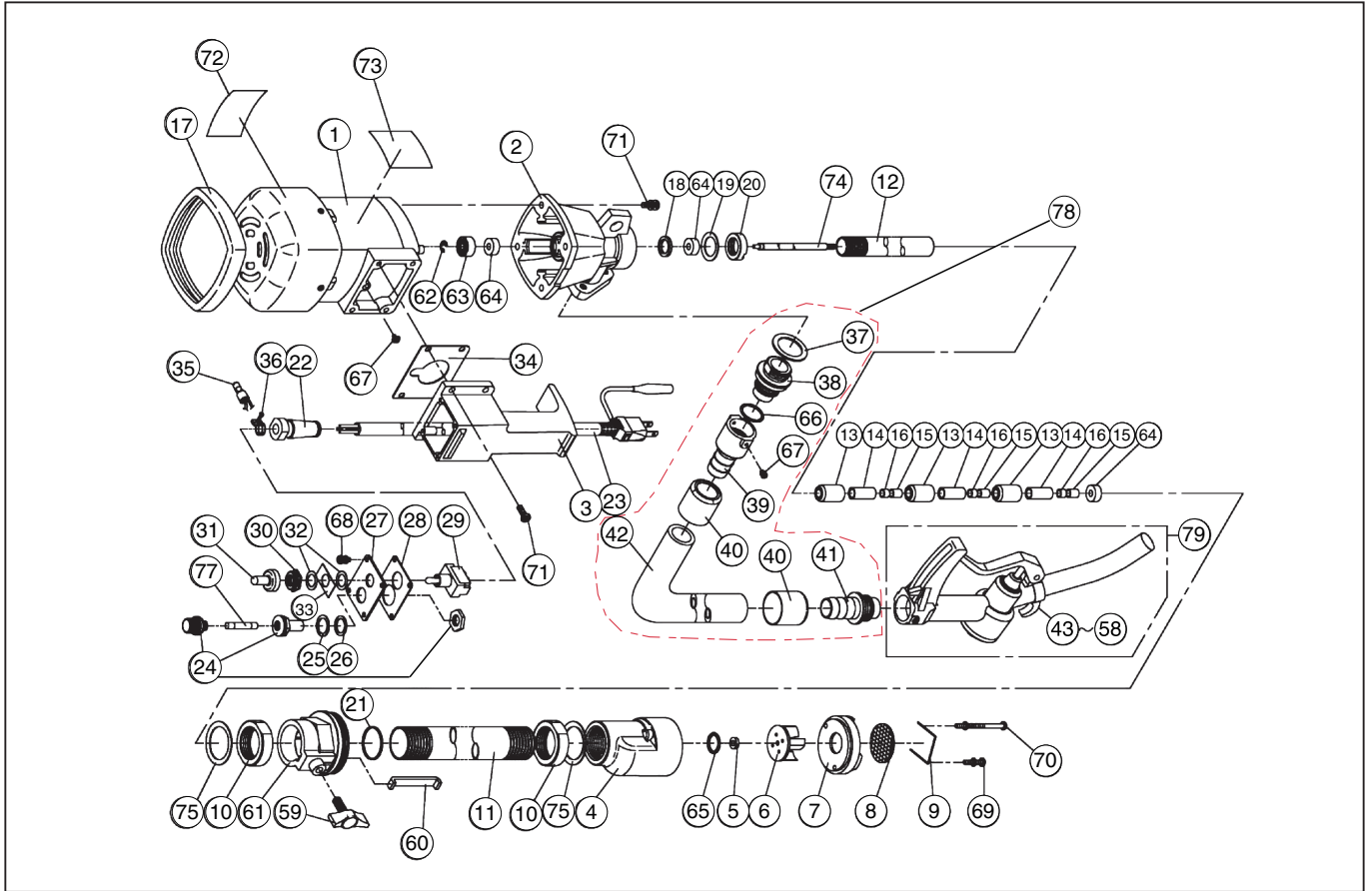


DWG No.004852218 MODEL:FA-100 FORMFA-100-BAA-1

No.	PARTS CODE	PARTS NAME	QTY	MATERIAL/SIZE	REMARKS
1	004009202	100V MOTOR	1	PAB-FA1-100W BAA-1	
1	004009601	230V MOTOR	1	PAB-FA5-100W BAB-1	
2	004007901	CAPSULE	1	ADC	
3	004002110	HANDLE	1	ADC	
4	004008004	PUMP BODY	1	ADC	
5	004000502	THRUST METAL	1	BS	
6	004000304	RESIN BLADE	1	NYLON6 WITH INSERT SLEEVE	
7	004008102	PUMP COVER	1	ZDC	
8	004008401	FILTER	1	SUS	
9	004008501	FILTER STOPPER	1	SUS	
10	004001304	PIPE NUT	2	ZDC	
11	004008601	OUTER PIPE	1	ELECTRICAL STEEL WIRE PI	
12	004008701	INTERMEDIATE BEARING PIPE	1		
13	004001601	RUBBER BUSHING	3	NBR	
14	004001702	INTERMEDIATE STEEL BUSHING	3	S15C	
15	004009901	BEARING METAL	3	6X8X10 MB0610DU	
16	004010001	BEARING METAL	3	6X8X6 MB0606DU	
17	004002003	CUSHION GUM	1	NBR	
18	004001101	INTERMEDIATE PIPE PACKING	1	NBR	
19	004002901	INTERMEDIATE PLATE SPRING	1	SUP	
20	004001002	INTERMEDIATE PIPE NUT	1	S35C	
21	004001902	CAPSULE PACKING	1		
22	004006501	CORD BUSH (AC)	1	NBR	
23	005006002	FR-200 AC CORD	1	0.75SX5M VCT	
24	004010102	FUSE HOLDER	1	ECHO FH-001AF	
25	004002701	HOLDER WASHER	1	BS	
26	004002801	HOLDER PACKING	1	NBR	
27	004002301	SWITCH BOARD	1	SS	
28	004002402	SWITCH PACKING	1		
29	004010202	SNAP SWITCH	1	WD1011 OR MJ4T-51CS	

◆ Bare engine can not be supplied

FA-100

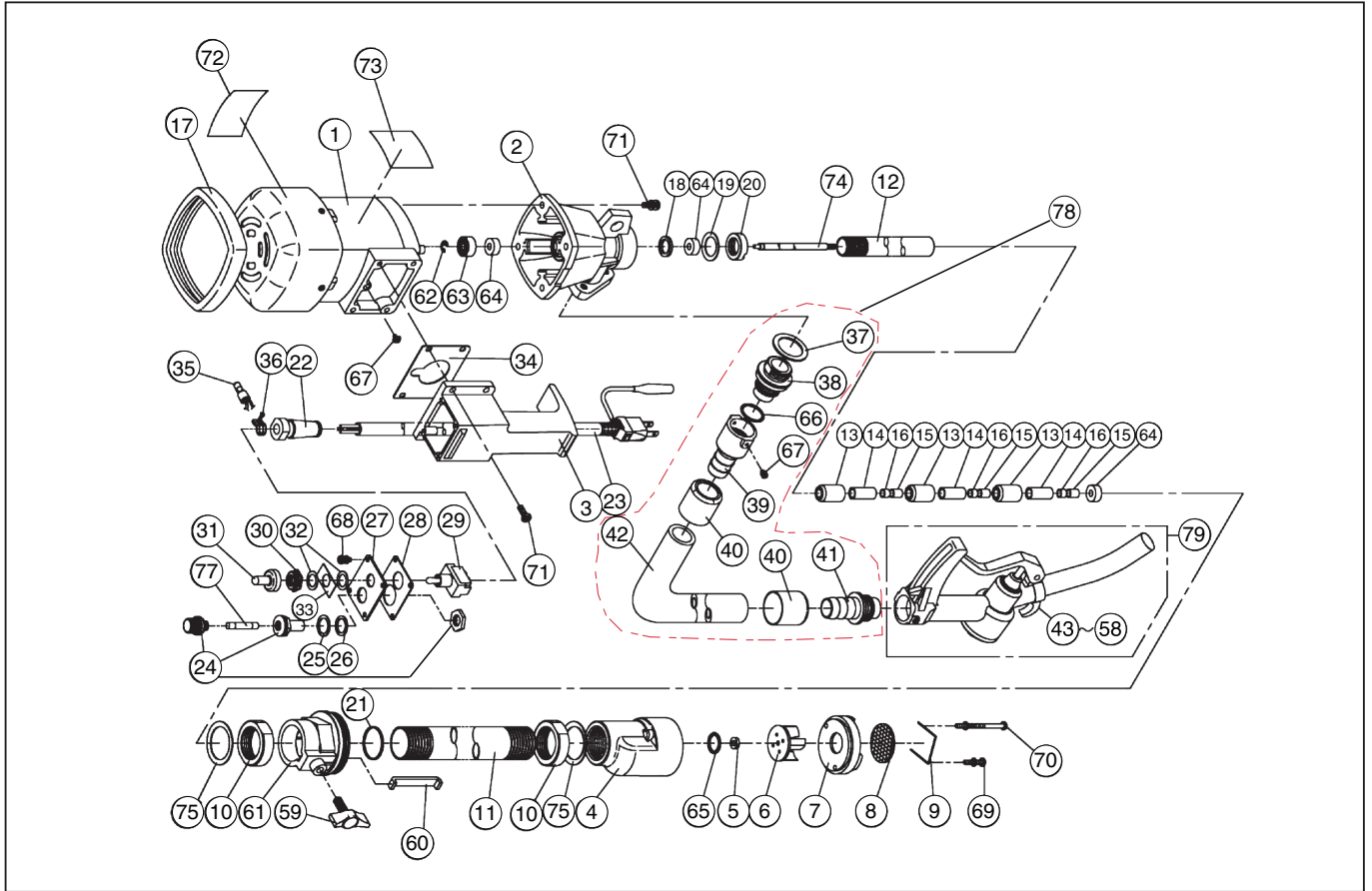


DWG No.004852218 MODEL:FA-100 FORM:FA-100-BAA-1

No.	PARTS CODE	PARTS NAME	QTY	MATERIAL/SIZE	REMARKS
30	004002502	SWITCH NUT	1	BS6 WITH HEXAGON FLANGE	
31	004002601	SWITCH GUM	1	NBR	
32	004003602	SWITCH SEAL	2		
33	004010301	ON-OFF PLATE	1	WD1901	
34	004002202	HANDLE PACKING	1		
35	944500002	SOLDERLESS CONNECTOR	1	CE-2	
36	940119010	HOSE BAND	1	φ 10	
37	004003802	FLANGE PACKING	1		
38	004004104	HEXAGON FLANGE	1	ZDC	
39	004004402	STRAIGHT FLANGE	1	ZDC	
40	004004202	HOSE PIPE	2	ALP	
41	004004304	NOZZLE FLANGE	1	ZDC	
42	004009501	HOSE	1		
43	008003305	QU-20 OIL FEED NOZZLE BODY	1	ADC	
44	008003403	QU-20 VALVE GUIDE	1	ADC	
45	008001206	QU-20 SEAL BUSHING	1	BS	
46	008000704	QU-20 NOZZLE LOT	1	SUS	
47	008001004	QU-20 GUM	1	NBR	
48	008000506	QU-20 GUIDE	1	ADC	
49	008003502	QU-20 CAP	1	ADC	
50	008001303	QU-20 PRESS LEVER	1	SS	
51	008000804	QU-20 NOZZLE PIPE	1	ELECTRICAL STEEL WIRE PI	
52	008000903	QU-20 NOZZLE SPRING	1	SWP	
53	889855030	O-RING	1	P30 NBR	
54	889855006	O-RING	1	P6 NBR	
55	889855020	O-RING	1	P20 NBR	
56	850819136	RIVET	1	3X12 SWRM	
57	707819018	+ SCREW	2	M3X6 SWRM	
58	008001601	QU-20 PRESS LEVER PLATE	1	CU	
59	001001506	SC-20 WING BOLT	1	PC	

◆ Bare engine can not be supplied

FA-100



DWG No.004852218 MODEL:FA-100 FORM:FA-100-BAA-1

No.	PARTS CODE	PARTS NAME	QTY	MATERIAL/SIZE	REMARKS
60	005001302	FR-100 STOPPER	1	SPC	
61	004012701	DRUM ADAPTER	1	ADC	
62	888327006	SHAFT STOP RING	1		
63	912706006	BEARING	1	626ZZ	
64	893555003	OIL SEAL	3	6X16X7	
65	889855018	O-RING P18	1	P18 NBR	
66	889855020	O-RING	1	P20 NBR	
67	708119019	SPRING WASHER + SCREW	2	3X8 SWRM	
68	707819037	+ SCREW	4	M4X10 SWRM	
69	707819041	+ SCREW	1	M4X20 SWRM	
70	004010401	+ SCREW	1	M4X45 SWRM	
71	707819047	+ SCREW	8	M5X14 SWRM	
72	004006402	CAUTION LABEL	1	VINYLON	
73	004010802	FA-100-BAA-1 LABEL	1		
73	004010901	FA-100-BAB-1 LABEL	1		
74	004001507	ROD	1	S45C	
75	004001401	SPRING	2	SUP	
77	945300010	FUSE	1	2A	
78	004801004	DELIVERY HOSE SET	1		
79	008850209	NOZZLE ASSY	1		

◆ Bare engine can not be supplied